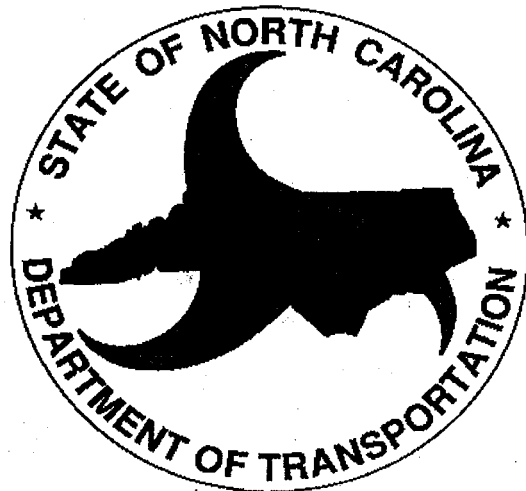


North Carolina Department of Transportation
Project Development and Environmental Analysis Branch



NC 24-27 WIDENING

STANLY/MONTGOMERY COUNTIES

TIP PROJECTS R-2530B, B-4974 AND R-2527

CITIZENS INFORMATIONAL WORKSHOP

NOVEMBER 18, 2010

CITIZENS INFORMATIONAL WORKSHOP

NC 24-27 Widening
From NC 740 in Albemarle to the Troy Bypass
Stanly and Montgomery Counties
TIP Projects R-2530B, B-4974 and R-2527

PURPOSE OF THE CITIZENS INFORMATIONAL WORKSHOP

The purpose of this workshop is to involve the public in the project development process for the NC 24-27 widening projects. If you have comments or suggestions about the proposed improvements described in this handout, please inform a representative of the North Carolina Department of Transportation (NCDOT). Please use the enclosed comment sheet to express your concerns or suggestions.

NCDOT realizes individuals living close to a proposed project want to be informed of the possible effects of the project on their homes and businesses. However, exact information is not available at this stage of the project development process. For example, design work is necessary before the actual right of way limits can be established. This type of detailed information will be available at a later date. The purpose of this workshop is to receive your comments and suggestions *before* final design decisions are made.

Written comments on this project may be left with NCDOT representatives at the workshop or mailed to NCDOT. If additional information is needed or you would like to submit comments after the workshop, please address requests and comments to:

Write: Gregory Thorpe, Ph.D., Manager
ATTN: Lisa Feller, PE, Project Development Engineer
NCDOT - PDEA
1548 Mail Service Center
Raleigh, North Carolina 27699-1548

Call: Lisa Feller, PE, Project Development Engineer
(919) 733-7844 ext. 262

Email: Lisa Feller, PE, Project Development Engineer
lfeller@ncdot.gov

PROJECT DESCRIPTION

Proposed Improvements

The North Carolina Department of Transportation (NCDOT) proposes to widen NC 24-27 from NC 740 in Albemarle to the proposed Troy Bypass (Draft State Transportation Improvement Program (STIP) Project No. R-623) that will begin at the intersection of NC 24-27 and Saunders Road (SR 1550) / Dairy Road (SR 1138). The proposed improvements include the construction of a new bridge over the Pee Dee River. The proposed projects will add two additional lanes and a grass median. The project limits are listed below:

- R-2530B – NC 24-27 from NC 740 in Albemarle to the Pee Dee River,
- B-4974 – Bridge No. 51 bridge replacement over the Pee Dee River,
- R-2527 – NC 24-27 from the Pee Dee River to the proposed Troy Bypass.

The purpose of these projects is to improve traffic flow and the level of service (LOS) on the section of NC 24-27 through the projects' study areas and to maintain a bridge across the Pee Dee River that addresses the needs of highway users.

Anticipated Right of Way Impacts

The existing right of way on NC 24-27 is approximately 60 feet. Approximately 150 to 200 feet of right of way will be required to accommodate the proposed improvements. The maps at this meeting show the proposed study area width. NCDOT will develop a best fit alignment which is safe, cost effective, and which minimizes impacts to existing development and historic and natural resources.

PROJECT SCHEDULE AND COSTS

Currently, NCDOT is scheduled to complete an Environmental Assessment in 2011. A public hearing is anticipated four to six months after the completion of this document. More detailed designs will be presented at this public hearing. At this public hearing, the public will have an opportunity to review a map showing the proposed designs. Factors which may affect the designs of these projects include engineering criteria and environmental factors such as relocation of homes or businesses, wetlands, historic sites, etc. A form is available from NCDOT representatives if you feel you have or know of a structure which has historical significance. If no major issues are discovered, the final environmental document is scheduled for completion by 2012.

These proposed projects are funded for right of way (R/W) acquisition and construction in the Draft State Transportation Improvement Program (STIP). Their current schedules and estimated costs are as follows:

Project Number	R/W Acquisition Begins	Construction Begins	Right of Way Cost	Construction Cost	Mitigation Cost	Prior Years Cost	Total Project Cost
R-2530B	2014	2016	\$5,750,000	\$22,300,000	\$0	\$26,597,000	\$54,647,000
B-4974	2014	2016	\$1,800,000	\$18,200,000	\$0	\$0	\$20,000,000
R-2527	2016	2018	\$4,100,000	\$32,300,000	\$4,057,000	\$2,574,000	\$43,031,000

No final decisions have been made regarding these projects. Therefore, the costs and schedules shown are preliminary and subject to change. As planning for the projects continue, we will include all comments and suggestions to the extent possible.

THE PROJECT DEVELOPMENT PROCESS

Project development and environmental studies for federally-funded highway projects are conducted in order to comply with the National Environmental Policy Act (NEPA). NCDOT is preparing an Environmental Assessment (EA) for this project.

The Environmental Assessment will discuss the purpose and need for the proposed improvements, evaluate alternatives, and analyze the project's impact on both the human and natural environment.

The document will address the many areas of concern including, but not limited to, the following:

Efficiency and safety of travel	Wildlife and plant communities
Neighborhoods and communities	Water quality
Relocation of homes and businesses	Floodplains and streams
Economy of project area	Farmland
Land use plans	Archaeological sites
Historic properties	Hazardous materials
Wetlands	Traffic noise
Endangered species	Air quality

Over the next few months, you can expect to see different project team members visit the area. Team members may take photographs, make notes, take measurements or mark important locations. However, these markers are only surveying and documentation guides and they do not necessarily indicate that your property will be impacted by the project.

As representatives of the State of North Carolina, we strive to treat you and your land, home or business with respect and courtesy. NCDOT kindly asks that you allow our staff on your property to conduct the necessary studies. If the highest standards of customer service are not observed, or if you have questions, please contact Lisa Feller.

OPPORTUNITIES FOR PUBLIC INVOLVEMENT / AWARENESS

SCOPING LETTER - Published in the NC Environmental Bulletin. This letter notifies agencies and groups on the State Clearinghouse mailing list that a project study has been initiated and solicits comments from them.

SMALL GROUP MEETING(S) - Presentations/meetings are held at the request of neighborhood associations or other interest groups.

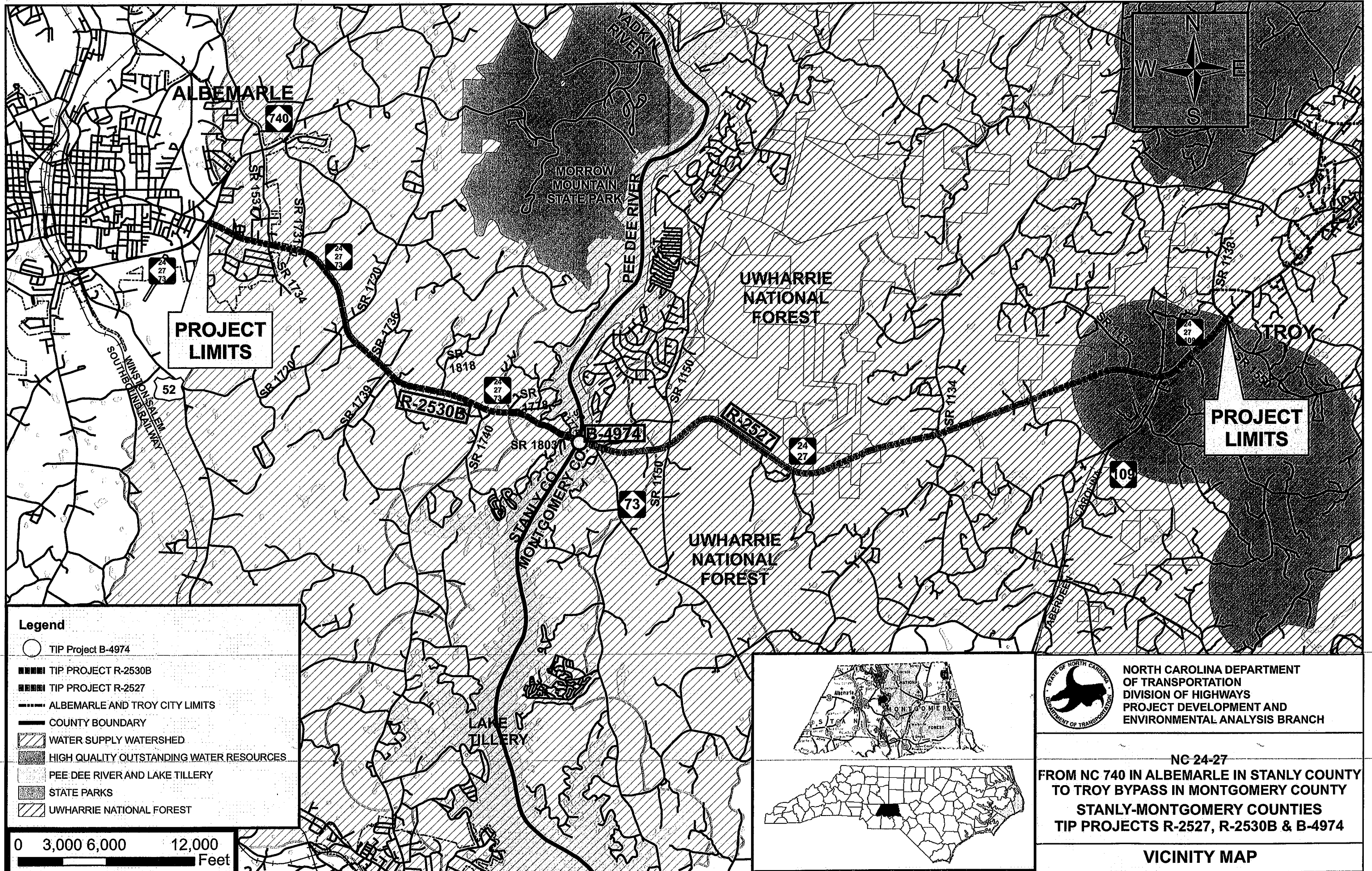
NEWSLETTERS - On some projects, newsletters are sent to area residents and interest groups. Newsletters describe the project, discuss the project's status, and outline the alternatives being studied.

CITIZENS INFORMATIONAL WORKSHOP(S) – Informal meeting(s) with the public. NCDOT staff conducts these workshops to speak one-on-one with citizens about projects. Comment sheets are provided for citizens to write down their questions, comments, and concerns. The number of workshops scheduled for a project depends on the scope and anticipated impact of the project.

DOCUMENT DISTRIBUTION – Copies of environmental documents are submitted to the State Clearinghouse for distribution and a notice is published in the NC Environmental Bulletin. Upon request, NCDOT will provide copies of the document to the public. Copies are available for public viewing at NCDOT Raleigh and Division offices, the State Clearinghouse office, local government offices, including the local council of government office, and local public libraries.

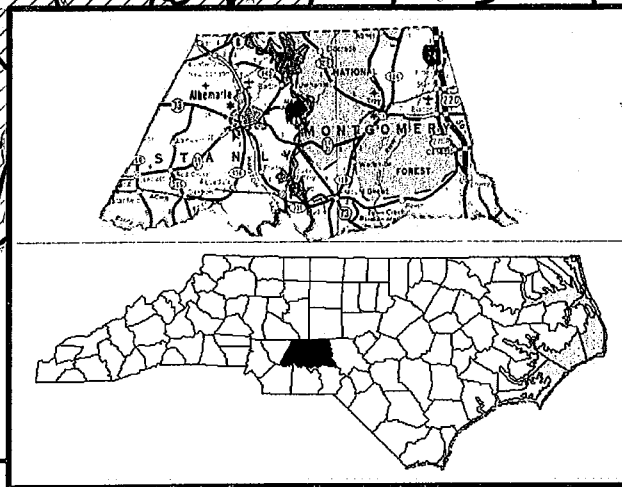
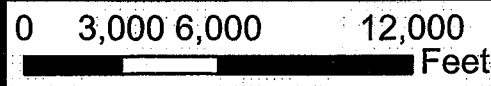
PUBLIC HEARING – One or more formal public hearings are held and public comments are recorded. Format typically involves a short presentation followed by an opportunity for citizens to comment.


CITIZEN LETTER – Citizens are encouraged to write NCDOT, provide information and express concerns regarding proposed improvements at anytime during the process. Correspondence from citizens and interest groups is considered during the course of planning study and is included in the project file.



Legend

- TIP Project B-4974
- ▨ TIP PROJECT R-2530B
- ▨ TIP PROJECT R-2527
- ALBEMARLE AND TROY CITY LIMITS
- COUNTY BOUNDARY
- ▨ WATER SUPPLY WATERSHED
- ▨ HIGH QUALITY OUTSTANDING WATER RESOURCES
- ▨ PEE DEE RIVER AND LAKE TILLERY
- ▨ STATE PARKS
- ▨ UWHARRIE NATIONAL FOREST



 NORTH CAROLINA DEPARTMENT OF TRANSPORTATION
DIVISION OF HIGHWAYS
PROJECT DEVELOPMENT AND ENVIRONMENTAL ANALYSIS BRANCH

NC 24-27
FROM NC 740 IN ALBEMARLE IN STANLY COUNTY
TO TROY BYPASS IN MONTGOMERY COUNTY
STANLY-MONTGOMERY COUNTIES
TIP PROJECTS R-2527, R-2530B & B-4974

VICINITY MAP

**Citizens Informational Workshop
Comment Sheet
TIP Nos. R-2530B, B-4974 and R-2527**

November 18, 2010

Please take a few minutes to share your thoughts about the information discussed at today's meeting. Please complete the comment sheet and return it to the comment table.

NAME: _____
(Please print)

ADDRESS: _____
(Please print)

Neighborhood: _____

Phone/Email address: _____

COMMENTS _____

Please send comments to:
Gregory Thorpe, Ph.D., Manager
ATTN: Lisa Feller, PE, Project Development Engineer
NCDOT - PDEA
North Carolina Department of Transportation
1548 Mail Service Center
Raleigh, North Carolina 27699-1548

**THANK YOU FOR ATTENDING THE WORKSHOP.
YOUR COMMENTS ARE VERY IMPORTANT IN THE PROJECT DEVELOPMENT PROCESS.**